

Jayco | Precept & Precept Prestige Class A Motorhome

# PRECEPT

SUPREME QUALITY & DRIVABILITY



**2+3**  
YEAR | YEAR  
WARRANTY



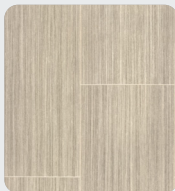
# INTERIOR DESIGN



## DOVER



Wood



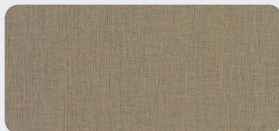
Floor



Countertop



Main Fabric



Furniture

## MODERN FARMHOUSE



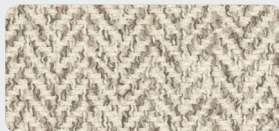
Wood



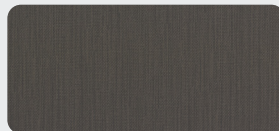
Floor



Countertop



Main Fabric



Furniture

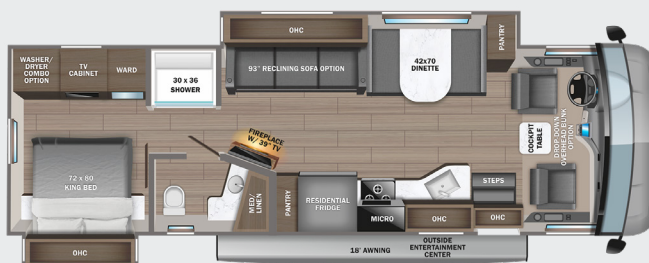


# Jayco PRECEPT

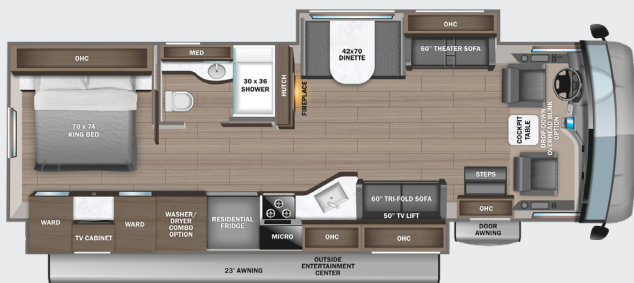
**31UL** OPTIONS: A, B



**34B** OPTIONS: A



**34G** OPTIONS: A



**36A** OPTIONS: A, B



**36C** OPTIONS: A



**OPTIONS**

**A**



15 Cu. Ft. Fridge

**B**



Theater Sofa

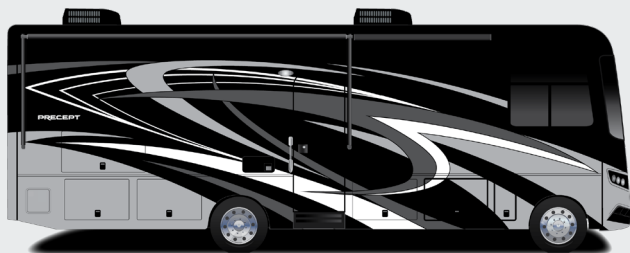
## EXTERIOR SELECTIONS



Standard Graphics Package



Alpine Full-Body Paint



Denali Full-Body Paint



Everest Full-Body Paint

# STANDARDS & OPTIONS

## CUSTOMER VALUE PACKAGE

JRIDE® PLUS: Computer-balanced driveshaft, Bilstein® steering stabilizer, Koni® shocks, variable-rate front and rear jounce bumpers, heavy-duty front and rear stabilizer bars, 22.5 in. Michelin® tires

Automatic hydraulic leveling jacks

Frameless windows

15,000 BTU A/C unit with heat pump and second 13,500 BTU A/C unit

Exterior entertainment center with outside speakers and LED HD Smart TV mounted on swivel bracket

Electric patio awning with LED lights

Slideout awning(s)

Onan® Marquis Gold Genset 5,500W generator with auto-gen start

1,200W inverter

50 amp electrical service

10 gal. gas/electric water heater

Sony® infotainment center with Apple® CarPlay™ and Android Auto™

Backup and side-view cameras

Removable driver/passenger cockpit table

LED-lit, solid-surface kitchen countertops with recessed stainless steel sink and sink covers

LED HD Smart TV in living area

Day/night roller shades in living area

## DRIVING

Ford® F53 chassis

GVWR- 22,000 lb. (31UL, 34B, 34G) 24,000 lb. (36A, 36C)

GCWR- 26,000 lb. (31UL, 34B, 34G), 30,000 lb. (36A, 36C)

7.3L V-8 335 HP engine with 468 ft.-lb. torque

6-speed automatic TorqShift® transmission with overdrive and tow haul mode

210 amp alternator

G-rated highway tires- 235/80R22.5 (31UL, 34B, 34G), 255/80R22.5 (36A, 36C)

Front and rear disc, 4-wheel anti-lock brakes

5,000 lb. rear hitch receiver with dual connector and 7-pin plug

12V chassis battery

80 gal. fuel tank

120 in. panoramic windshield

6-way power and swivel driver/passenger seats

Soft-touch, vinyl-wrapped automotive dash

Tilt steering wheel

A/C and cruise control

Power front privacy shade with manual side privacy shades

## EXTERIOR

StrongholdVBL™ roof, floor and sidewalls

Bead-foam insulation (R-24 max roof, R-9 max floor, R-8 max walls)

One-piece, seamless, fiberglass front cap

One-piece, seamless, crowned fiberglass roof

Fiberglass exterior walls with vinyl graphics

Entrance door with industry's largest travel-view window

Electric-powered entrance steps

Lockable, pass-through storage compartments with metal slam latches

Heated holding tanks (12V pads)

16.5 gal. propane tank (56 lb.)

LP quick-connect hookup

Exterior utility center

Winterization drain system

Outside shower

12V demand water pump

Transfer switch with reverse polarity protection

(2) 6V AGM (220Ah) house batteries on slideout tray

200W solar panel with dual controller

Third brake light

## INTERIOR

JAYCOMMAND® powered by Firefly

84 in. interior ceiling height with padded vinyl ceiling

High-intensity recessed LED ceiling lights

LED-lit hardwood fascia

Hardwood cabinet doors and drawers

Ball-bearing drawer guides

Jayco-exclusive, easy-operation legless dinette table

2-point lap safety belts in all designated seating locations

30,000 BTU auto-ignition ducted furnace (N/A 36A)

(2) 30,000 BTU auto-ignition ducted furnaces (36A)

Electric fireplace (34B, 34G, 36C)

Prep for satellite dish

Cable TV hookup with RG-6 coax and video selector switch

Winegard 2.0 Wi-fi/4G antenna

Residential refrigerator

Furrion® all-in-one cooktop and oven

Residential-size microwave

Decorative kitchen backsplash

Water filtration system

Shower with decorative surround, glass door, skylight and light

Stainless steel bathroom sink

Porcelain toilet with foot flush

Powered roof vent in bathroom with wall switch

Walk-around, king-size bed with bedspread and nightstands

USB port and wireless charging in nightstands

LED HD Smart TV in bedroom

Under-bed storage (select models)

Large wardrobes

Bunks with industry-exclusive 300 lb. capacity each (36A)

Wall-mounted tablet holder in each bunk (36A)

Smoke alarm

Carbon monoxide detector

## OPTIONS

Drop-down overhead bunk in cab area with 750 lb. capacity

Combination washer/dryer (34B, 34G, 36A)

Stackable washer/dryer (36C)

Power theater seating (31UL, 36A) (STD 34G, 36C)

15 cu. ft. 12V refrigerator



### COMPUTER-BALANCED DRIVESHAFT

Ensures smooth and efficient power transfer to the wheels

### BILSTEIN STEERING STABILIZER

Reduces driver fatigue by significantly improving steering, handling and comfort

### VARIABLE RATE FRONT & REAR JOUCE BUMPERS

Assist during extreme road occurrences to absorb impact and dampen excess road noise

### HEAVY-DUTY FRONT & REAR STABILIZER BAR

A large bar and polyurethane bushings, instead of rubber, transfer power faster for extra support, more stability and easier handling

### KONI SHOCK ABSORBERS

Large-diameter tube design pairs gas and hydraulics to resist heat and pressure while independently adjusting to changing road conditions

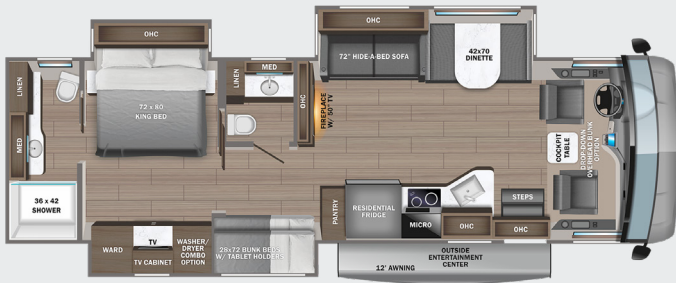
### 22.5" MICHELIN® TIRES

Commercial-grade tires built for long hauls and heavy loads

FLOORPLAN	GVWR (lbs.)	GCWR (lbs.)	WHEEL BASE	OVERALL LENGTH	EXTERIOR HEIGHT WITH SATELLITE AND A/C	EXTERIOR WIDTH	INTERIOR HEIGHT	FRESH WATER CAPACITY (gal.)	GRAY WASTE WATER CAPACITY (gal.)	BLACK WASTE WATER CAPACITY (gal.)
31UL	22,000	26,000	228"	33'	12' 10"	101"	84"	72	40	50
34B	22,000	26,000	228"	36' 11"	12' 10"	101"	84"	72	40	40
34G	22,000	26,000	238"	36' 6"	12' 10"	101"	84"	72	40	50
36A	24,000	30,000	252"	38' 10"	12' 10"	101"	84"	72	40/32	40/32
36C	24,000	30,000	252"	38' 10"	12' 10"	101"	84"	72	40/32	40/32



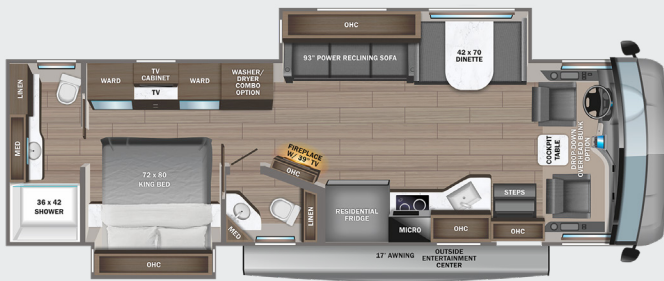
36B OPTIONS: A, B



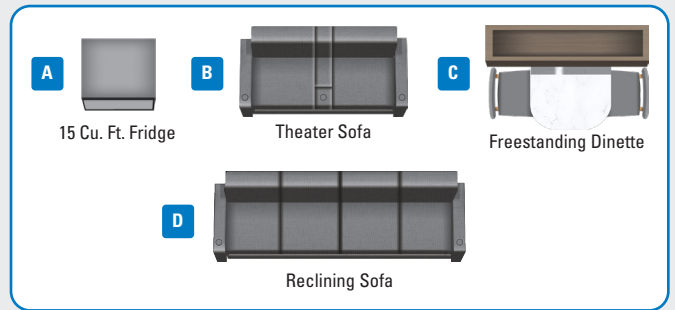
36H OPTIONS: A, B, D



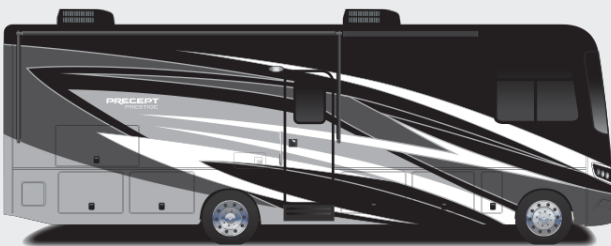
36U OPTIONS: A, C



OPTIONS



## EXTERIOR SELECTIONS



Chickadee Full-Body Paint



Oriole Full-Body Paint



Warbler Full-Body Paint



Wren Full-Body Paint



# STANDARDS & OPTIONS

## CUSTOMER VALUE PACKAGE

JRIDE® PLUS: Computer-balanced driveshaft, Bilstein® steering stabilizer, Koni® shocks, variable-rate front and rear jounce bumpers, heavy-duty front and rear stabilizer bars, 22.5 in. Michelin® tires

Automatic hydraulic leveling jacks

Frameless windows

15,000 BTU A/C unit with heat pump and second 13,500 BTU A/C unit

Exterior entertainment center with outside speakers and LED HD Smart TV mounted on swivel bracket

Electric patio awning with LED lights

Slideout awning(s)

Onan® Marquis Gold Genset 5,500W generator with auto-gen start

2,000W inverter

50 amp electrical service

10 gal. gas/electric water heater

Pioneer® 8 in. infotainment center with Apple® CarPlay™ and Android Auto™

Backup and side-view cameras

Removable driver/passenger cockpit table

LED-lit, solid-surface kitchen countertops with recessed stainless steel sink and sink covers

LED HD Smart TV in living area

Day/night roller shades in living area

## DRIVING

Ford® F53 chassis

GVWR- 24,000 lb.

GCWR- 30,000 lb.

7.3L V-8 335 HP engine with 468 ft.-lb. torque

6-speed automatic TorqShift® transmission with overdrive and tow haul mode

210 amp alternator

G-rated highway tires- 255/80R22.5

Front and rear disc, 4-wheel anti-lock brakes

5,000 lb. rear hitch receiver with dual connector and 7-pin plug

12V chassis battery

80 gal. fuel tank

120 in. panoramic windshield

6-way power and swivel driver/passenger seats

Soft-touch, vinyl-wrapped automotive dash

Tilt steering wheel

A/C and cruise control

Power front privacy shade with manual side privacy shades

## EXTERIOR

StrongholdVBL™ roof, floor and sidewalls

Bead-foam insulation (R-24 max roof, R-9 max floor, R-8 max walls)

One-piece, seamless, fiberglass front and rear caps

One-piece, seamless, crowned fiberglass roof

Premium Sikkens full-body paint

Entrance door with industry's largest travel-view window

Electric-powered entrance steps

Lockable, pass-through storage compartments with metal slam latches

24.5 gal. propane tank (83 lb.)

LP quick-connect hookup

Theftford® Sani-Con Turbo macerator system

Exterior utility center

Winterization drain system

Outside shower

12V demand water pump

Transfer switch with reverse polarity protection

(2) 6V AGM (220Ah) house batteries on slideout tray

200W solar panel with dual controller

Third brake light

## INTERIOR

JAYCOMMAND® powered by Firefly

84 in. interior ceiling height with padded vinyl ceiling

High-intensity recessed LED ceiling lights

Vinyl plank flooring

LED-lit hardwood fascia

Hardwood cabinet doors and drawers

Deluxe hidden cabinet hinges

Ball-bearing drawer guides

Jayco-exclusive, easy-operation legless dinette table

2-point lap safety belts in all designated seating locations

30,000 BTU auto-ignition ducted furnace

Electric fireplace

Prep for satellite dish

Cable TV hookup with RG-6 coax and video selector switch

Winegard 2.0 Wi-fi/4G antenna

Wood-framed kitchen window with spice cabinets

Residential refrigerator

2-burner induction cooktop

Convection microwave oven

Water filtration system

Shower with decorative surround, glass door, skylight and light

LED-lit stainless steel bathroom sink

Porcelain toilet with foot flush

Powered roof vent in bathroom with wall switch

Walk-around, king-size bed with bedspread and nightstands

USB port and wireless charging in nightstands

LED HD Smart TV in bedroom

Under-bed storage (select models)

Large wardrobes

Bunks with industry-exclusive 300 lb. capacity each (36B)

Wall-mounted tablet holder in each bunk (36B)

Smoke alarm

Carbon monoxide detector

## OPTIONS

Drop-down overhead bunk in cab area with 750 lb. capacity

Combination washer/dryer (36U, 36B)

Stackable washer/dryer (36H)

Power theater seating (N/A 36U)

120 in. straight reclining sofa (36H)

15 cu. ft. 12V refrigerator

Free-standing table with 4 chairs (36U)



### COMPUTER-BALANCED DRIVESHAFT

Ensures smooth and efficient power transfer to the wheels

### BILSTEIN STEERING STABILIZER

Reduces driver fatigue by significantly improving steering, handling and comfort

### VARIABLE RATE FRONT & REAR JOUNCE BUMPERS

Assist during extreme road occurrences to absorb impact and dampen excess road noise

### HEAVY-DUTY FRONT & REAR STABILIZER BAR

A large bar and polyurethane bushings, instead of rubber, transfer power faster for extra support, more stability and easier handling

### KONI SHOCK ABSORBERS

Large-diameter tube design pairs gas and hydraulics to resist heat and pressure while independently adjusting to changing road conditions

### 22.5" MICHELIN® TIRES

Commercial-grade tires built for long hauls and heavy loads

FLOORPLAN	GVWR (lbs.)	GCWR (lbs.)	WHEEL BASE	OVERALL LENGTH	EXTERIOR HEIGHT WITH SATELLITE AND A/C	EXTERIOR WIDTH	INTERIOR HEIGHT	FRESH WATER CAPACITY (gal.)	GRAY WASTE WATER CAPACITY (gal.)	BLACK WASTE WATER CAPACITY (gal.)
36B	24,000	30,000	252"	38' 8"	12' 10"	101"	84"	72	50/41	31/41
36H	24,000	30,000	252"	38' 8"	12' 10"	101"	84"	72	40/50	40
36U	24,000	30,000	252"	38' 2"	12' 10"	101"	84"	72	50	31/41



# INTERIOR DESIGN



## FOSSIL



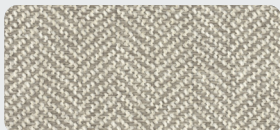
Wood



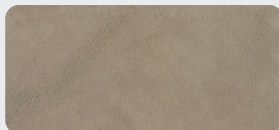
Floor



Countertop



Main Fabric



Furniture

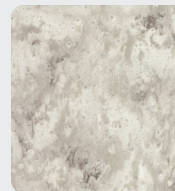
## ASHVILLE



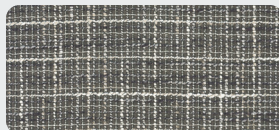
Wood



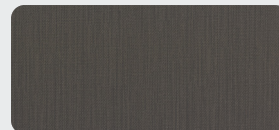
Floor



Countertop



Main Fabric



Furniture



# THE JAYCO DIFFERENCE



1. **120 in. panoramic windshield** equipped with oversized wiper blades to allow for maximum visibility
2. **Exterior entertainment center** comes standard with outside speakers and LED HD Smart TV mounted on swivel bracket
3. **One-piece seamless fiberglass roof** offers unmatched durability
4. **Lockable pass-through storage** with easy-to-use Slam-latch™ doors
5. **Seatbelts in every designated seating position** secure the most precious cargo
6. **Frameless windows** make exterior maintenance easier than ever and give the unit a sleek, modern look
7. **Stronghold VBL™** vacuum-bonded, laminated floor, sidewalls and roof

**2+3**  
YEAR | YEAR  
LIMITED | STRUCTURAL  
WARRANTY

## TRAVEL WITH CONFIDENCE • NO ONE OFFERS A BETTER WARRANTY

At Jayco, we build our RVs to handle every adventure, then back them with our industry-leading 2+3 limited warranty. Our 2-year limited warranty has you covered for 2 camping seasons. That's 730 days. In addition, our 3-year structural limited warranty has you covered for 3 camping seasons or 1,095 days. You won't find a better limited warranty in the business, because the only strings that we attach are those that deliver the ultimate in reliability. That's the Jayco difference. So go explore. For a copy of our 2-year limited + 3-year structural limited warranty with complete terms and conditions, please contact your local Jayco dealer.

Meet your Jayco Dealer



Scan QR  
code for  
specification  
definitions



Some specs at the time of print may include estimates.  
For the most updated information, please visit  
[Jayco.com/precept](http://Jayco.com/precept) or [Jayco.com/precept-prestige](http://Jayco.com/precept-prestige)

**Jayco, Inc. | P.O. Box 460 | Middlebury, IN 46540**

See dealer for further information and prices. All information in this brochure and on [www.jayco.com](http://www.jayco.com) is the latest available at the time of publication approval. Jayco reserves the right to make changes and to discontinue models without notice or obligation. Photography may show optional equipment or props used for decoration purposes only. RVs built for sale in Canada may differ to conform to Canadian codes. JAYCO and the JAYCO BIRD IN FLIGHT are registered trademarks of Jayco, Inc. Printed in USA 3/23 ©2023 Jayco, Inc. 2032603.2023

**Jayco - Part of the Jayco Family of Companies**