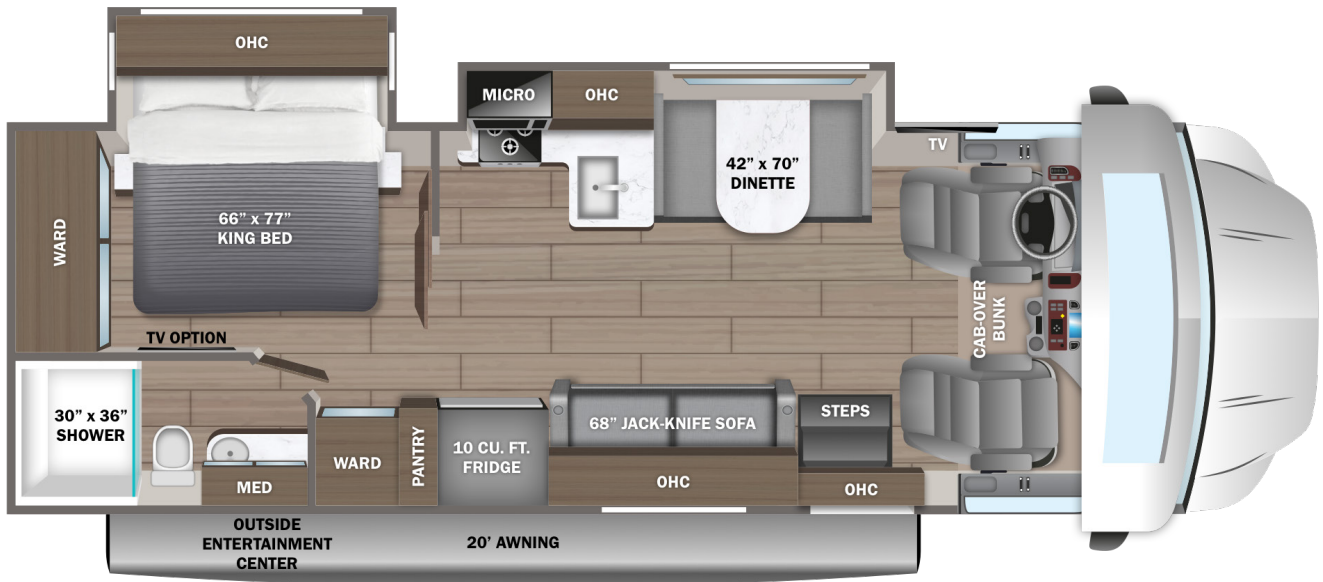


32U



EXTERIOR SELECTIONS



Partial Paint Package

STANDARDS & OPTIONS

CUSTOMER VALUE PACKAGE

JRide® Plus: Computer-balanced driveshaft, heavy-duty rear stabilizer bar, standard front stabilizer bar and Hellwig® helper springs
 One-piece, seamless fiberglass front cap
 Automotive-bonded panoramic window in front cap with power shade
 Automatic hydraulic leveling jacks
 Frameless windows
 Electric patio awning with LED lights
 6,000W generator with auto-gen start
 2,000W inverter
 15,000 BTU A/C with heat pump
 200W solar panel with dual controller and second house battery
 Firefly Multiplex system - wall-mounted touchscreen and mobile app for total coach control
 LED HD Smart TV in living area

DRIVING

Ford® F550 4X4 chassis
 GVWR - 19,500 lb.
 GCWR - 31,500 lb.
 6.7L Power Stroke V8 Turbo diesel engine with block heater - 330 HP at 2,200 RPM and 950 ft. lb. torque at 1,800 RPM
 10-speed automatic transmission
 332-amp alternator
 G-rated tires- 225/70R19.5
 Steel wheels with matte black liners
 12,000 lb. rear hitch receiver
 7-pin plug
 Ford® AdvanceTrac® with RSC® (roll stability control) and trailer sway control
 Integrated trailer brake controller
 Single chassis battery (750 CCA 78 AH)
 Dual fuel tanks (26.5 gal. and 40 gal.)
 2 in. rear lift
 Ford® SYNC® 4 infotainment center with Apple® CarPlay™ and Android Auto™
 Audible lane departure warning
 Pre-Collision Assist® with automatic emergency braking (AEB)
 SOS Post Crash Alert System™
 Driver and passenger airbags
 Safety Canopy® system with roll-fold side-curtain airbags
 Remote keyless entry and perimeter anti-theft alarm
 Securilock® anti-theft ignition
 Quad dual-beam halogen headlights
 Rainlamp wiper activated headlights
 Remote start
 Adjustable gas/brake pedals
 Cruise control
 Power windows and door locks
 Auxiliary start switch
 8-way power driver seat
 Tilt steering wheel
 Privacy curtain for cab area

EXTERIOR

StrongholdVBL™ roof, floor and sidewalls
 Bead-foam insulation (R-24 max roof, R-9 max floor, R-5 max walls)
 One-piece, seamless, fiberglass roof
 Fiberglass exterior walls with partial paint and vinyl graphics
 Entrance door with industry's largest travel-view window

Electric-powered entrance step with integrated house battery compartment
 Slideout awning(s)
 Exterior LED HD Smart TV with (2) high-output, marine-grade exterior speakers
 Lockable storage compartments with slam latches
 Third brake light
 Roof ladder
 Prep for satellite dish
 Cable TV hookup with RG-6 coax
 Winegard 2.0 Wi-Fi/4G antenna
 (2) 6V AGM house batteries
 Transfer switch with reverse polarity protection
 50-amp electrical service
 Detachable power cord
 16.5 gal. propane tank (56 lb.)
 LP quick-connect hookup
 Heated holding tanks (12V pads)
 Exterior utility center
 Winterization drain system
 Black tank flush
 Outside shower
 12V demand water pump
 Water filtration system

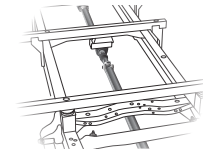
INTERIOR

Custom-molded ABS surround in cab-over area
 Overhead bunk with 750 lb. capacity and safety net
 84 in. interior ceiling height with padded vinyl ceiling
 High-intensity recessed LED ceiling lights
 LED-lit fascia
 Hardwood cabinet doors and drawer fronts
 Deluxe hidden cabinet hinges
 Ball-bearing drawer guides
 Blackout night roller shades
 30,000 BTU auto-ignition furnace
 10 gal. gas/electric water heater
 JBL® audio system
 Jayco-exclusive, easy-operation legless dinette table
 2-point lap safety belts in all designated seating locations
 Car seat tethers (select floorplans)
 Smoke alarm
 Carbon monoxide detector
 Fire extinguisher
 10 cu. ft. 12V refrigerator
 Furrion® all-in-one cooktop and oven
 Residential-size microwave
 Recessed stainless steel kitchen sink with sink covers
 Solid-surface kitchen countertops
 Decorative kitchen backsplash
 Pop-up charging station in kitchen with 120V outlets and USB ports
 Walk-around, king-size bed with bedspread and nightstands
 USB port and wireless charging in nightstands
 Large wardrobes
 Shower with decorative surround, glass door, skylight and light
 Recessed stainless steel bathroom sink
 Porcelain toilet with foot flush
 Powered roof vent in bathroom with wall switch

OPTIONS

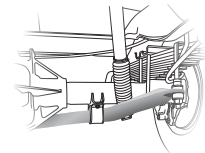
Power theater seating
 LED HD Smart TV in bedroom
 15 cu. ft. 12V refrigerator
 Dual A/C units (15,000 and 13,500 BTU) with power management system
 Aluminum rims
 Folding windshield sun shade

JRIDE PLUS



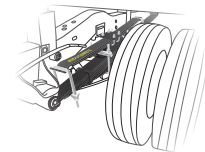
COMPUTER-BALANCED DRIVESHAFT

Ensures smooth and efficient power transfer to the wheels



HEAVY-DUTY STABILIZER BAR

Reduces the body roll of a vehicle during fast cornering or over road irregularities



HELLWIG® HELPER SPRINGS

Work with the chassis' existing springs to give the RV more support, improving stability under heavy loads

FLOORPLAN	GVWR (lbs.)	GCWR (lbs.)	WHEEL BASE	OVERALL LENGTH	EXTERIOR HEIGHT WITH SATELLITE AND A/C	EXTERIOR WIDTH	INTERIOR HEIGHT	FRESH WATER CAPACITY (gal.)	GRAY WASTE WATER CAPACITY (gal.)	BLACK WASTE WATER CAPACITY (gal.)
32U	19,500	31,500	227"	34' 2"	12'	101"	84"	42.5	31	31

Meet your Jayco Dealer



Scan QR code for specification definitions

Some specs at the time of print may include estimates. For the most updated information, please visit Jayco.com

Jayco, Inc. | P.O. Box 460 | Middlebury, IN 46540

See dealer for further information and prices. All information in this brochure and on www.jayco.com is the latest available at the time of publication approval. Jayco reserves the right to make changes and to discontinue models without notice or obligation. Photography may show optional equipment or props used for decoration purposes only. RVs built for sale in Canada may differ to conform to Canadian codes. JAYCO and the JAYCO BIRD IN FLIGHT are registered trademarks of Jayco, Inc. Printed in USA 5/24 ©2024 Jayco, Inc. 2032959



Jayco - Part of Jayco Family of Companies