

Jayco | 2025 North Point Fifth Wheel



NORTH POINT

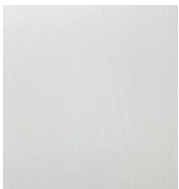
TOP OF THE LINE LUXURY

2+3
YEAR | YEAR
WARRANTY





MODERN FARMHOUSE



Main Wood



Accent Wood



Floor



Countertop



Main Fabric

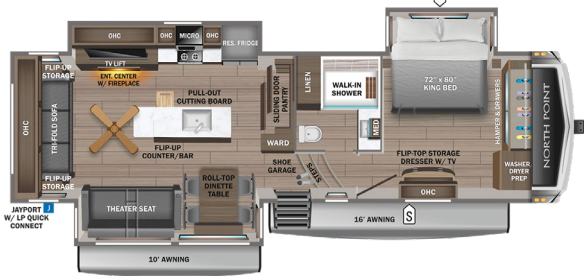


Accent Fabric

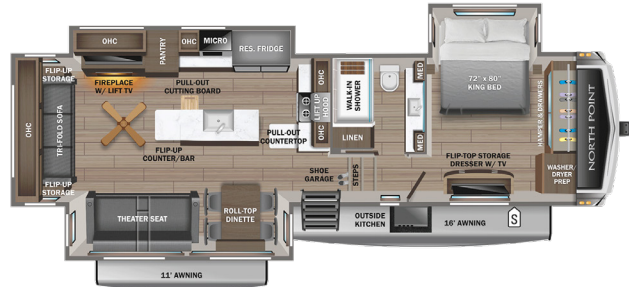
NORTH POINT



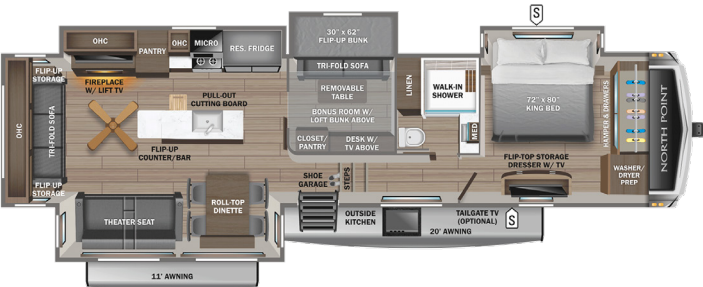
310RLTS OPTIONS: A, B



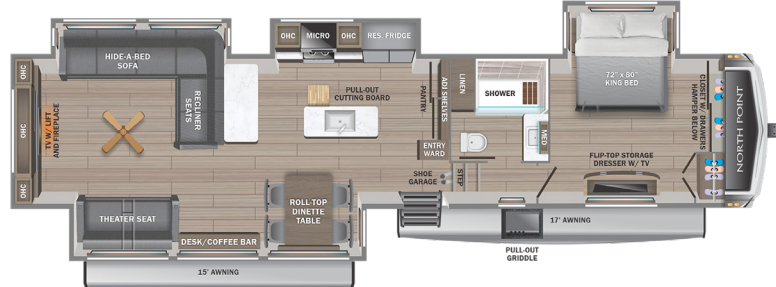
340CKTS OPTIONS: A, B



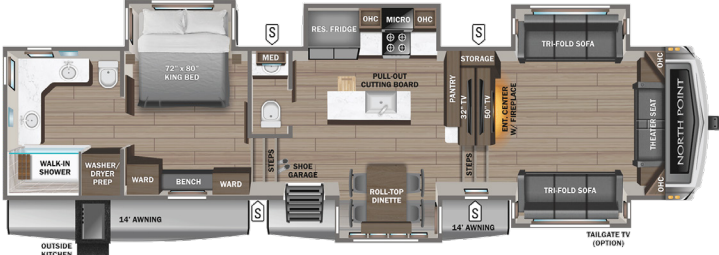
377RLBH OPTIONS: A, B



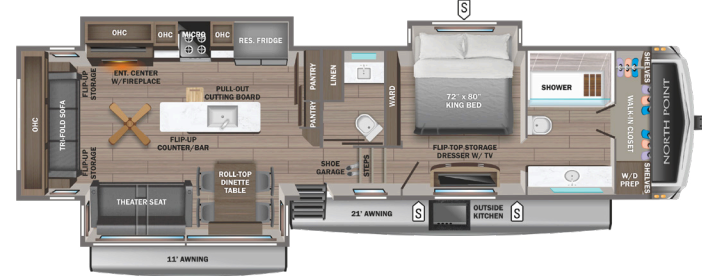
381CKRE OPTIONS: A, B



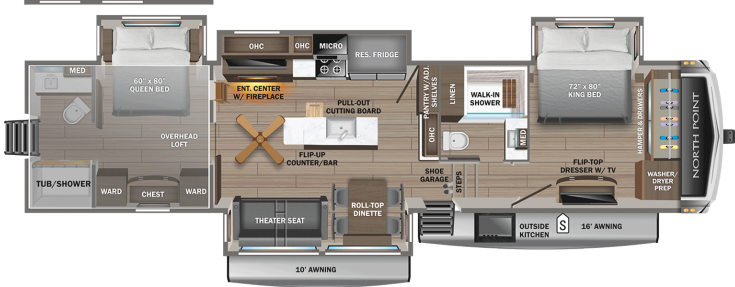
382FLRB OPTIONS: A, B



387FBTS OPTIONS: A, B



390CKDS OPTIONS: A, C



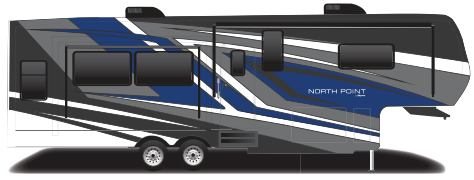
STORAGE

- MICRO MICROWAVE
- OHC OVERHEAD CABINETS
- FRIDGE REFRIGERATOR
- WARD WARDROBE

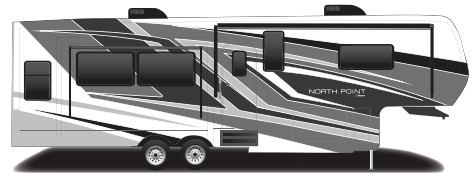
OPTIONS

- A** 20 Cu. Ft. Fridge
- B** Queen Bed
- C** Super Sofa

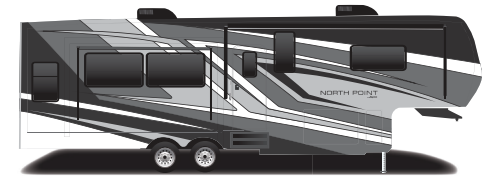
PAINT OPTIONS



Mineral Full-Body Paint



Pearl Full-Body Paint



Smoke Full-Body Paint

STANDARDS & OPTIONS

EXTERIOR

(3) 40 lb. propane bottles with auto regulator (120 lb. max LP system)
 102 in. wide body construction
 12 in. structural steel I-beam with 10 in. steel drop frame
 3,000 lb. tow hitch with 4-way pin (N/A 390CKDS)
 Battery disconnect
 Built in sewer hose carrier
 Climate Shield™ zero-degree tested weather protection:
 40,000 BTU output furnace
 Double layer fiberglass batt insulation (roof and floor)
 Fully-enclosed and heated underbelly (ducted)
 PEX plumbing, 2 in. block foam and reflective foil
 Custom automotive-grade vinyl exterior graphics package
 Digital TV antenna with 5G prep
 Exterior marine-grade speakers with Bluetooth® controller
 Frameless, dark tinted, safety-glass windows
 Fully enclosed, universal docking center:
 Black tank flush
 Independent satellite wiring
 Quick-connect outside shower
 Selectable water connections
 Whole coach cable hookups
 Winterization and sanitation hookups
 Inverter pre-wire to select outlets
 JayPort system for outside griddle (all floorplans without a standard outside kitchen)
 JaySMART™ (Safety Markers And Reverse Travel) LED lighting (patented)
 LED exterior lighting package
 Magnum Truss™ XL6™ Roof System (strongest tested roof in the industry)
 with Alpha roof membrane system with limited lifetime warranty
 Painted fiberglass front cap with clear coat and built-in specialty LED lighting
 Pass-through storage with Slam-latch™ baggage doors
 Skirt metal enclosed drop frame
 Stronghold VBL™ aluminum framed and vacuum bond laminated gel coated fiberglass exterior walls (including rear wall and slide room end walls)
 Under-mounted spare tire
 Water heater bypass

INTERIOR

5/8 in. tongue-and-groove joined plywood floor decking
 Bathroom skylight
 Built in spice rack inside kitchen cabinet door (select models)
 Built in laundry hamper in wardrobe (select models)
 Carbon monoxide and LP detector
 Ceiling fan (select models)
 CPAP prepped bedroom
 Dual USB charging ports throughout
 Extra 120V power outlets in kitchen and slide rooms
 Flip-up countertop extension/bar top (select models)
 Flip-up hidden storage in bedroom chest of drawers (select models)
 Flip-up tabletop storage next to tri-fold sofa (select models)
 Gas-strutted under-bed storage
 Handcrafted hardwood glazed doors and drawers
 Integrated under-mount sink and lever faucet in main bathroom
 LED accent lighting above slideouts
 LED backlit custom framed mirror and medicine cabinet
 LED interior lighting throughout

No in floor heat registers throughout coach
 Pantry with adjustable shelves and pull out drawers (includes 120V outlet)
 Pull out "Roll Top" dinette
 Pull-out cutting board above trash can
 Pull-out utility drawer under kitchen sink
 Removable TV tray tables at theater seats
 Residential "Do it all" sink with pull-out kitchen faucet, glass rinse, and vegetable rinse
 Residential finished dove tail jointed drawers throughout
 Residential NuVo H2O whole coach water treatment system with water softening and triple cartridge filters
 Residential quilted bedspread and pillow shams
 "Shoe garage" in hallway step (select models)
 Soft close, heavy-duty, 75 lb. full-extension, steel ball-bearing drawer guides
 Solid hardwood slide fascia
 Stain protected fabric on all furniture
 Toe kick nightlights in bedroom and bathroom
 Tri-fold hide-a-bed sofa with residential sleep surface (select models)
 True interior design (Modern Farmhouse)
 Up/down switch to raise/lower the TV by theater seats
 Vinyl flooring (made in the USA) throughout (includes slideout floors)

CUSTOMER VALUE PACKAGE (MANDATORY)

15,000 BTU "Whisper Quiet" A/C (main)
 15,000 BTU "Whisper Quiet" A/C (bedroom)
 16 gal. gas/electric DSI water heater
 50 in. 4K Smart LED HDTV with fully digital HDMI® output and two extra HDMI cables
 Backup, main entrance door and side observation security camera prep (includes a power switch in the bedroom to use the optional 7 in. monitor for security)
 Custom machined aluminum rims
 Electric patio awning with integrated RGB LED lights (Multi-color with remote control)
 Hidden hinges, magnet latches and soft close cabinet doors and drawers
 JBL® home entertainment system with sound bar and wireless subwoofer
 Keyed-Alike™ lock system (single key for all doors/locks)
 MORryde Safe-T-Rail grab handle
 Residential king (72 in. x 80 in.) mattress with under-bed storage
 Rooftop and ground solar prep
 Tire pressure monitoring system
 Wireless remote control system (includes Bluetooth® wireless controls) with dimmer switches

5-STAR HANDLING PACKAGE (MANDATORY)

17.5 in. 16 ply 'H' rated Uniroyal tires
 Dexter® Axles with ABS and Tow Assist - includes Nev-R-Adjust® brakes and E-Z Lube® hubs
 MORryde® CRE-3000™ rubberized suspension
 MORryde® rubber pin box
 Wet bolt fasteners, bronze bushings and 4,000 lb. leaf springs

LUXURY PACKAGE (MANDATORY)

2nd electric patio awning with integrated RGB LED lights (multi-color with remote control)
 32 in. 4K Smart bedroom TV

6-point hydraulic auto-leveling system
 Cellular prep for 5G Wi-Fi and JAYCOMMAND® "Smart RV" system
 Central vacuum system with dust port
 Frameless dark tinted safety-glass windows
 Free-standing roll top (no pedestal) table with (2) free-standing and (2) folding chairs
 GE 21 cu. ft. residential refrigerator with 1800W inverter
 GE Profile Series residential 24 in. range (3.7 cu. ft. with 9100 BTU high output burner)
 High gloss gel coated sidewalls
 LED fireplace with electric space heater
 MORryde® StepAbove™ entrance steps with strut assist (main entrance)
 Oversized multi-battery compartment (industry leading room for 4-6 batteries)
 Privacy roller shades
 Residential solid-surface kitchen countertop
 Residential walk-in shower with shampoo/soap holder and teak seat
 Washer/dryer prep

OPTIONS

20 cu. ft. 12V refrigerator
 39 in. 4K Smart TV in cargo area
 3rd 15,000 BTU ducted A/C
 5,500W Onan® Microquint generator
 7K hydraulic disc brake package (ABS N/A with disc brakes)
 8K hydraulic disc brake package (ABS N/A with disc brakes)
 Customer Value Package: Whisper Quiet 15,000 BTU central air with heat pump
 Extreme Weather Package: 120V heated holding tank pads and 12V wrapped and heated fresh water line
 Frameless dual pane tinted safety-glass windows
 Generator prep
 MORryde independent suspension w/shocks, 8K axles and disc brakes (ABS not available)
 Outside Halo griddle for outside kitchens or JayPort system (includes LP quick-connect) (select models)
 Overlander 2 Solar Package: 30-amp controller, 1800W inverter and (2) 200W solar panels
 Overlander 4 Solar Package: (4) 200W solar panels, (2) 100-amp/hour lithium heated batteries, 60-amp controller, 3000W inverter, DC/DC power converter, soft start power save main 15K A/C, soft start power save for bedroom 15K A/C, battery monitor, energy management system, roof pre-wire for additional solar panels, generator prep capable and heavy gauge steel battery enclosure
 Overlander EXT Solar Package: 3,000W inverter/charger with internal 50-amp transfer switch, energy management system, (6) solar panels with 200W each, (6) 100-amp/hour lithium heated batteries, 12V DC A/C in bedroom, DC to DC battery charger, 100-amp MPPT controller, energy management, generator prep capable
 Queen residential foam top mattress
 Slideout awning(s) (quantity varies by model)
 Truma on-demand hot water system
 Wireless backup/side view/front entry door observation kit with 7 in. monitor

The 5-Star Handling Package is a Jayco exclusive, a powerful blend of high-end American-made components that make pulling a luxury fifth wheel a breeze.



DEXTER® AXLES WITH ABS & TOW ASSIST - INCLUDES NEV-R-ADJUST® BRAKES & E-Z LUBE® HUBS

The Benchmark of the trailer industry!



MORryde® PIN BOX

Allows pin box to travel forward and backward as well as side-to-side, creating a smoother tow.



DEXTER® HEAVY-DUTY 1/2" SHACKLES WITH WET BOLT FASTENERS AND BRONZE BUSHINGS

Resists the wear-and-tear of towing.



MORryde® RUBBERIZED SUSPENSION SYSTEM

Better absorbs and isolates road shock.



UNIROYAL® TIRES

17.5 in. 16-ply 'H' Rated

*Indicates split tanks

FLOORPLAN	TOTAL EXTERIOR LENGTH	EXTERIOR WIDTH	EXTERIOR HEIGHT (WITH A/C)	INTERIOR HEIGHT (MAIN)	INTERIOR HEIGHT (UPPER DECK)	UNLOADED VEHICLE WEIGHT	DRY HITCH WEIGHT	GVWR	CARGO CARRYING CAPACITY	FRESH WATER CAPACITY (INCLUDING WATER HEATER)	GRAY WASTE WATER CAPACITY	BLACK WASTE WATER CAPACITY	SLEEPING CAPACITY
310RLTS	36' 0"	8' 6"	13' 4"	8' 6"	6' 7"	12,875	2,570	16,000	3,125	75	87*	50	2-4
340CKTS	37' 10"	8' 6"	13' 4"	8' 6"	6' 7"	13,880	2,475	17,000	3,120	75	87*	50	2-4
377RLBH	42' 11"	8' 6"	13' 4"	8' 6"	6' 8"	15,310	3,015	18,100	2,790	75	87*	51	5-7
381CKRE	TBD	8' 6"	TBD	8' 6"	TBD	TBD	TBD	TBD	TBD	75	TBD	TBD	2-4
382FLRB	43' 10"	8' 6"	13' 3"	8' 6"	6' 7"	15,280	2,970	17,995	2,715	75	82.5*	74*	6-8
387FBTS	42' 11"	8' 6"	13' 3"	8' 6"	6' 7"	14,670	2,775	17,650	2,980	75	87*	87*	2-4
390CKTS	43' 10"	8' 6"	13' 5"	8' 6"	6' 7"	16,055	2,955	18,850	2,795	76	87*	100*	5-7

Meet your Jayco Dealer



Scan QR code for specification definitions

Some specs at the time of print may include estimates. For the most updated information, please visit Jayco.com

Jayco, Inc. | P.O. Box 460 | Middlebury, IN 46540

See dealer for further information and prices. All information in this brochure and on www.jayco.com is the latest available at the time of publication approval. Jayco reserves the right to make changes and to discontinue models without notice or obligation. Photography may show optional equipment or props used for decoration purposes only. RVs built for sale in Canada may differ to conform to Canadian codes. JAYCO and the JAYCO BIRD IN FLIGHT are registered trademarks of Jayco, Inc. Printed in USA 11/24 ©2024 Jayco, Inc. 2032976



Jayco - Part of Jayco Family of Companies