

Jayco | 2025 Seismic Luxury Series Fifth Wheel



# SEISMIC LUXURY SERIES

ADVENTURE IN LUXURY

**2+3**  
YEAR | YEAR  
WARRANTY





VINTAGE FARMHOUSE



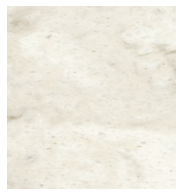
Main Wood



Accent Wood



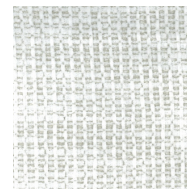
Floor



Countertop



Main Fabric



Accent Fabric

# SEISMIC LUXURY SERIES

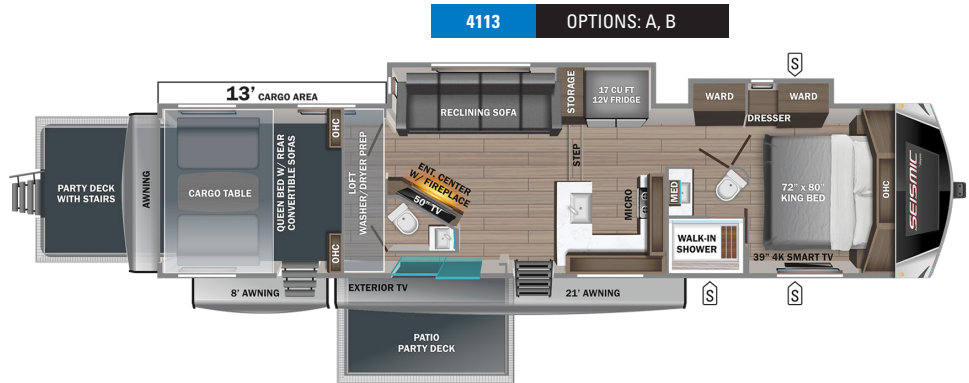
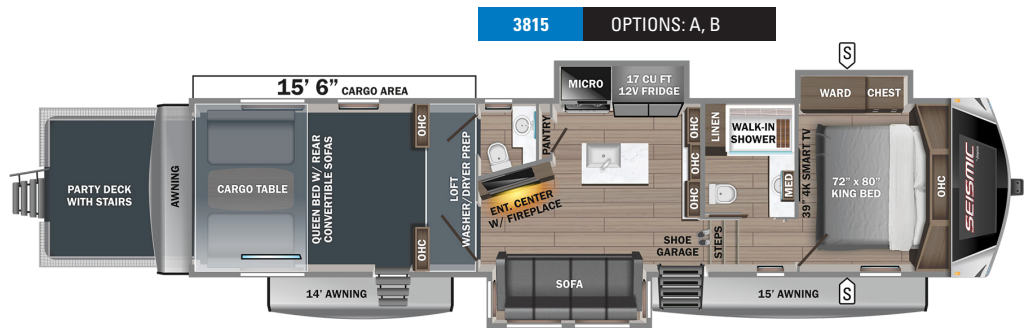
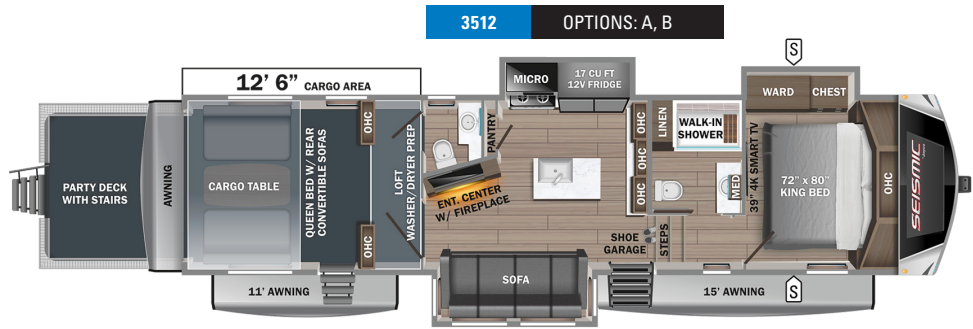


**S** STORAGE  
**MICRO** MICROWAVE  
**OHC** OVERHEAD CABINETS  
**FRIDGE** REFRIGERATOR  
**WARD** WARDROBE

**OPTIONS**

**A**  
  
 Queen Bed

**B**  
  
 Residential Refrigerator



## SEISMIC LS PAINT OPTIONS



Metallic Ice



Velocity Blue



Victory Red

# STANDARDS & OPTIONS

## EXTERIOR

102 in. wide-body structural steel I-beam construction  
 3-season removable garage wall  
 Battery disconnect  
 Climate Shield™ zero-degree tested weather protection:  
 40,000 BTU output furnace  
 Astro foil bubble wrap insulation throughout  
 Double layer fiberglass batt insulation (roof and floor)  
 Fully enclosed and heated underbelly (ducted)  
 PEX plumbing  
 Custom automotive-grade vinyl exterior graphics package  
 Detachable shore power cord  
 Dual 30 lb. propane bottle with auto regulator  
 Exterior marine-grade speakers with Bluetooth® controller  
 Folding roof ladder  
 Fully enclosed, LED-lit universal docking center:  
 Black tank flush  
 Independent satellite wiring  
 Quick-connect outside shower  
 Whole coach cable hookups  
 Winterization and sanitation  
 Helix Cooling System™ (industry exclusive):  
 Directional and closeable A/C vents  
 Jayco exclusive insulated dual duct design  
 Larger return air vents with user-accessible filters  
 Two exterior-mounted 15,000 BTU "Whisper Quiet" A/C unit (living room and bedroom)  
 JayPort for outside griddle  
 JaySMART™ (Safety Markers And Reverse Travel) LED lighting (patented)  
 LED exterior lighting package  
 Magnum Truss™ Roof System (strongest tested roof in the industry) with  
 Alpha roof membrane system with limited lifetime warranty  
 MORryde Safe-T-Rail grab handle  
 Oversized multi-battery compartment (industry leading room for 4-6 batteries)  
 Painted fiberglass front cap with clear coat and built-in specialty LED lighting  
 Pass-through storage with Slam-latch™ baggage doors  
 Stronghold VBL™ aluminum framed and vacuum bond laminated gel coated fiberglass exterior walls (including slide room end walls)  
 Under-mounted spare tire  
 Water heater bypass  
 Exterior spray port at the front entry door area

## INTERIOR

12V charging station  
 17 cu. ft. 12V refrigerator  
 5/8 in. tongue-and-groove joined plywood floor decking and 3/8 in. tongue-and-groove joined plywood roof decking  
 Bathroom skylight  
 Carbon monoxide and LP detector  
 CPAP prepped bedroom  
 Custom interior design - Vintage Farmhouse  
 Dual USB charging ports (kitchen and bedroom)  
 Gas-strutted under-bed storage  
 Hallway window  
 Handcrafted hardwood glazed doors, drawers and trim  
 Hardwood safety handrail on hallway steps  
 Heavy-duty, 75 lb., full-extension, steel ball-bearing drawer guides  
 Hidden hinges, magnet latches, and soft close cabinet doors

Inverter pre-wire  
 JAYCOMMAND® Smart RV System  
 LED backlit custom framed mirror and medicine cabinet  
 LED fireplace with electric space heater (select models)  
 LED interior lighting throughout  
 No in floor heat registers throughout the coach  
 Porcelain foot flush toilet  
 Residential dove tail jointed drawers throughout  
 Residential quilted bedspread and pillow shams  
 Residential NuVo H2O whole coach water treatment system with water softening and triple cartridge filters  
 Residential vinyl flooring (made in the USA)  
 "Shoe garage" in hallway step (select models)  
 Solid hardwood slide fascia and cabinet doors  
 SuperSofa with heat, massage, recliners, eating tables and LED lighting  
 Vinyl flooring in slideouts (no carpet)

## RAMP AND CARGO EQUIPMENT

2 in. block-foam vacuum bonded and insulated garage floor (industry first)  
 Dual 30 gal. fuel tanks with timer (1 dedicated to generator)  
 Garage D-rings mounted to steel frame  
 HappiJac® electric-lift queen beds/convertible sofas with folding armrests and cup holders  
 LED high-intensity ramp lights  
 Ram air vents and power roof vent  
 Ramp patio kit with exterior steps  
 Rear electric patio awning  
 Rear ramp door and patio with anti-slip, non-skid flooring  
 Three seasons garage wall/doors (removable)  
 Tuff-ply, rubberized garage floor liner

## CUSTOMER VALUE PACKAGE (MANDATORY)

16 gal. gas/electric DSI water heater  
 39 in. 4K Smart bedroom TV  
 50" 4K Smart LED HDTV with fully digital HDMI® output in living room  
 50-amp service and 3rd A/C prep  
 Automotive style front windshield  
 Backup, main entrance door and side observation security camera prep (includes a power switch in the bedroom to use the optional 7 in. monitor for security)  
 Bathroom power vent  
 Cellular prep for 5G Wi-Fi  
 Custom machined aluminum rims  
 Dual electric awnings with RGB LED lights (multi-colored with remote control)  
 Frameless dark tinted safety-glass windows  
 GE Profile Series 30 in. residential convection microwave with built in air fryer  
 GE Profile Series residential 24 in. range (3.7 cu. ft. with 9,100 BTU high output burner)  
 Hidden hinges, magnet latches, and soft close cabinet doors and drawers  
 High gloss gel coated exterior sidewalls  
 Hydraulic 6-point auto-leveling system with oversized foot pads  
 JAYCOMMAND® "Smart RV" system powered by BMPRO®  
 JBL® home entertainment system with sound bar and wireless subwoofer  
 Keyed-Alike™ lock system  
 MORryde® StepAbove™ entrance steps with strut assist (main entrance)  
 Night roller shades in living room  
 NPS - Powered by Yamaha 6,000 watt generator, gas/C.A.R.B certified with built in pure sign inverter

Residential "Do it all" sink with pull-out kitchen faucet, glass rinse, and vegetable rinse  
 Residential "walk-in" shower with shampoo/soap holder, teak seat and shower tower  
 Residential king (72 in. x 80 in.) mattress with under-bed storage  
 Residential solid-surface kitchen countertop  
 Rooftop and ground solar prep  
 Washer/dryer prep  
 Wireless remote control system (includes Bluetooth® wireless interior controls) with dimmer switches

## 5-STAR HANDLING PACKAGE (MANDATORY)

17.5 in. 16 ply 'H' rated Uniroyal tires  
 Dexter® Axles with ABS and Tow Assist - includes Nev-R-Adjust® brakes and E-Z Lube® hubs  
 MORryde® CRE-3000™ rubberized suspension  
 MORryde® pin box  
 Wet bolt fasteners, bronze bushings and 4,000 lb. leaf springs

## OPTIONS

15,000 BTU drop-in cargo area A/C  
 32 in. 4K Smart LED cargo TV  
 7K hydraulic disc brake package (ABS N/A with disc brakes)  
 8K hydraulic disc brake package (ABS N/A with disc brakes)  
 Customer Value Package with 15,000 BTU A/C and heat pump  
 Extreme Weather Package:  
 120V heated holding tank pads  
 12V wrapped and heated fresh water line  
 Interior illuminated switch  
 Frameless dual-pane tinted safety-glass windows  
 Full body paint options: Metallic Ice, Velocity Blue and Victory Red  
 GE 21 cu. ft. residential refrigerator with 1800W inverter  
 MORryde independent suspension with 8K axles and disc brakes (ABS not available)  
 Overlander 2 Solar Package: 30-amp solar controller and (2) roof-mounted 200W solar panels with 1800W inverter  
 Overlander 4 Solar Package: (4) 200W solar panels, (2) 100-amp/hour lithium heated batteries, 60-amp controller, 3000W inverter, DC/DC power converter, soft start power save main 15K A/C, soft start power save for bedroom 15K A/C, battery monitor, energy management system, roof pre-wire for additional solar panels, generator option compatible and heavy gauge steel battery enclosure  
 Overlander EXT Solar Package: 3000W inverter/charger with internal 50-amp transfer switch, energy management system, (6) solar panels with 200W each, (6) 100-amp/hour lithium heated batteries, 12V DC A/C in bedroom, DC to DC battery charger, 100-amp MPPT controller management, generator prep capable  
 Patented Outside Tailgater Camp Kitchen  
 Queen independent foam-top mattress  
 Slideout awnings (quantity varies by model) (standard 4113)  
 Truma on-demand water heater  
 Wireless backup/rear, side view and front entrance door observation camera kit (includes a power switch in the bedroom to use the (optional) 7 in. monitor for security)  
 Outside Halo griddle for outside kitchens or JayPort system (includes LP quick-connect) (select models)

The 5-Star Handling Package is a Jayco exclusive, a powerful blend of high-end American-made components that make pulling a luxury fifth wheel a breeze.



**DEXTER® AXLES WITH ABS & TOW ASSIST - INCLUDES NEV-R-ADJUST® BRAKES & E-Z LUBE® HUBS**

The Benchmark of the trailer industry!



**MORryde® PIN BOX**

Allows pin box to travel forward and backward as well as side-to-side, creating a smoother tow.



**DEXTER® HEAVY-DUTY 1/2" SHACKLES WITH WET BOLT FASTENERS AND BRONZE BUSHINGS**

Resists the wear-and-tear of towing.



**MORryde® RUBBERIZED SUSPENSION SYSTEM**

Better absorbs and isolates road shock.



**UNIROYAL® TIRES**

17.5 in. 16 ply 'H' Rated

\*Indicates split tanks

FLOORPLAN	EXTERIOR TRAVEL LENGTH	EXTERIOR WIDTH	EXTERIOR HEIGHT (WITH A/C)	INTERIOR HEIGHT (MAIN)	INTERIOR HEIGHT (UPPER DECK)	UNLOADED VEHICLE WEIGHT	DRY HITCH WEIGHT	GVWR	CARGO CARRYING CAPACITY	FRESH WATER CAPACITY (INCLUDING WATER HEATER)	GRAY WASTE WATER CAPACITY	BLACK WASTE WATER CAPACITY	SLEEPING CAPACITY
3512	TBD	TBD	TBD	TBD	TBD	TBD	TBD	TBD	TBD	TBD	TBD	TBD	TBD
3815	TBD	TBD	TBD	TBD	TBD	TBD	TBD	TBD	TBD	TBD	TBD	TBD	TBD
4113	46' 1"	8' 6"	13' 3"	8' 3"	6' 4"	16,000	3,670	20,900	4,900	106	87*	87*	6-8

Meet your Jayco Dealer



Scan QR code for specification definitions

Some specs at the time of print may include estimates. For the most updated information, please visit [Jayco.com](http://Jayco.com)

Jayco, Inc. | P.O. Box 460 | Middlebury, IN 46540

See dealer for further information and prices. All information in this brochure and on [www.jayco.com](http://www.jayco.com) is the latest available at the time of publication approval. Jayco reserves the right to make changes and to discontinue models without notice or obligation. Photography may show optional equipment or props used for decoration purposes only. RVs built for sale in Canada may differ to conform to Canadian codes. JAYCO and the JAYCO BIRD IN FLIGHT are registered trademarks of Jayco, Inc. Printed in USA 11/24 ©2024 Jayco, Inc. 2032979



Jayco - Part of Jayco Family of Companies