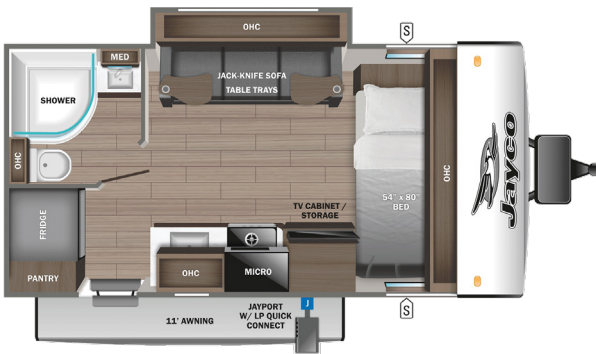


# JAY FEATHER MICRO



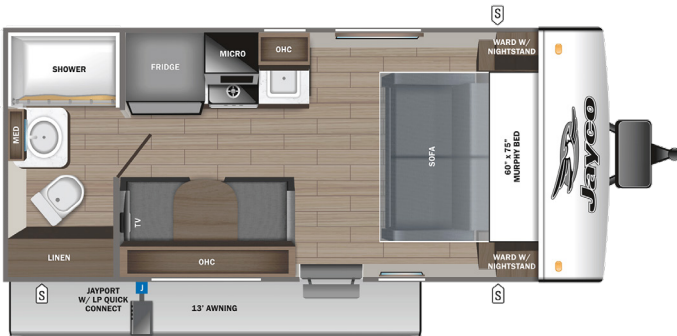
166FBS



171BH



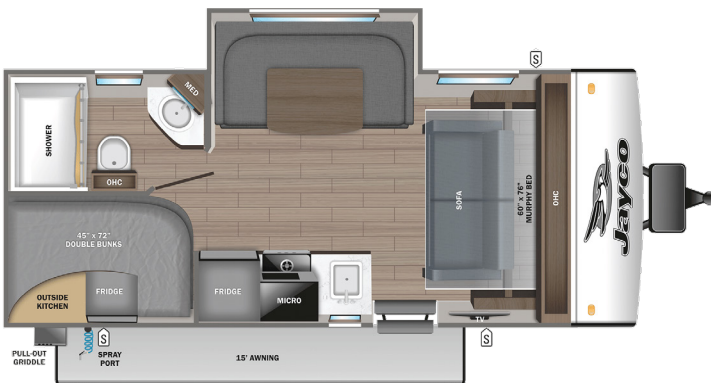
173MRB



183FBS



199MBS



	STORAGE
<b>MICRO</b>	MICROWAVE
<b>OHC</b>	OVERHEAD CABINETS
<b>FRIDGE</b>	REFRIGERATOR
<b>WARD</b>	WARDROBE

# STANDARDS & OPTIONS

## EXTERIOR

- 1.5 in. fresh water drain valve
- 2 in. Stronghold VBL™ floor with 2 lb. density foam
- Stronghold VBL™ roof which is tested to be as equally strong as the Magnum Truss Roof System
- Stronghold VBL™ walls with double-sided Azdel composite (sidewalls, rear walls and slide out boxes)
- Aerodynamic, rounded front profile with aluminum framing
- American-made Norco Z-frame with integrated A-frame
- Automotive-style aluminum rims
- Battery quick-disconnect
- Dark-tinted safety-glass windows
- Front and rear diamond plating
- Keyed-Alike™ lock system
- LCI Solid Step fold-down aluminum tread steps on main entry door
- Marine grade exterior speakers
- Modern graphics package with dual-colored sidewall
- PVC roofing membrane (limited lifetime warranty)
- Reinforced steel wheel wells
- Swing-out entry door assist handle
- Exterior TV Hookups 120V and cable

## INTERIOR

- 4 in. high-density dinette cushions with vinyl backing
- 4 in. soft-touch bunk mats (select models)
- 75 lb. full extension drawer guides
- Decorative backsplash
- Decorative roller shades with reflective barrier
- Handcrafted, hardwood door/drawer fronts
- Hidden-hinged cabinet doors
- High output auto-ignition LP gas furnace
- LED lighting throughout
- Plywood dinette, bed, bunk and shower/tub bases
- Residential vinyl flooring throughout
- Residential-style seamless countertops throughout

- Screwed and glued cabinet stiles
- Stainless steel kitchen and bathroom sink
- USB charging ports (multiple locations throughout)

## CUSTOMER VALUE PACKAGE (MANDATORY)

- 13,500 BTU Coleman® Mach Quiet-Series A/C
- 17 in. Griddle
- 20 lb. LP gas bottles with auto-regulator and ABS cover
- 55 gal. fresh water tank
- Bathroom skylight
- Black tank flush
- Detachable power cord
- Max-length power awning with LED light
- MAXXAIR® power roof vent
- On-demand 60,000 BTU water heater
- Power tongue jack
- Rock Solid stabilizer system
- Side and rear back-up camera prep
- Under mount spare tire

## JAY PRO PACKAGE (MANDATORY)

- 11 cu. ft. 12V fridge
- Radial tires with self-adjusting electric brakes
- 18 in. rear-mounted roof ladder - factory installed
- 32 in. 12V LED TV with built-in JBL sound bar and AM/FM/Bluetooth®
- Tire Pressure Monitoring (App based)
- Climate Shield (zero to 100 degree tested weather insulation package)
- Front slam-latch baggage doors
- Inverter pre-wire
- Overlander 1 Solar Package: (1) 200W solar panel and 30-amp digital controller
- Rubber-torsion axle
- Rear 2 in. receiver

## OPTIONS

- 120V heated tank pads
- 15,000 BTU Coleman® Mach Quiet Series A/C
- 30 lb. LP gas bottles with auto-regulator
- Accessory roof rack
- Convection microwave
- Overlander 2 Solar Package: (2) 200W solar panels, 1,800W inverter and 30-amp digital controller

FLOORPLAN	TOTAL EXTERIOR LENGTH	EXTERIOR WIDTH (WITH/WITHOUT WHEEL WELLS)	EXTERIOR HEIGHT (WITH A/C)	INTERIOR HEIGHT	UNLOADED VEHICLE WEIGHT	DRY HITCH WEIGHT	GVWR	CARGO CARRYING CAPACITY	FRESH WATER CAPACITY	GRAY WASTE WATER CAPACITY	BLACK WASTE WATER CAPACITY	SLEEPING CAPACITY
166FBS	19' 7"	8' 5"	10' 6"	6' 6"	3,925	475	4,995	1,070	55	30	30	2-4
171BH	20' 2"	8' 5"	10' 6"	6' 6"	3,750	445	4,995	1,245	55	30	30	3-5
173MRB	20' 10"	8' 5"	10' 5"	6' 6"	3,840	490	4,995	1,155	55	30	30	2
183FBS	TBD	TBD	TBD	TBD	TBD	TBD	TBD	TBD	TBD	TBD	TBD	TBD
199MBS	23' 1"	8' 5"	10' 5"	6' 6"	4,505	635	5,750	1,245	55	30	30	4-6

Meet your Jayco Dealer



Scan QR code for specification definitions

Some specs at the time of print may include estimates. For the most updated information, please visit [Jayco.com](http://Jayco.com)



Jayco, Inc. | P.O. Box 460 | Middlebury, IN 46540

See dealer for further information and prices. All information in this brochure and on [www.jayco.com](http://www.jayco.com) is the latest available at the time of publication approval. Jayco reserves the right to make changes and to discontinue models without notice or obligation. Photography may show optional equipment or props used for decoration purposes only. RVs built for sale in Canada may differ to conform to Canadian codes. JAYCO and the JAYCO BIRD IN FLIGHT are registered trademarks of Jayco, Inc. Printed in USA 11/24 ©2024 Jayco, Inc. 2032966

Jayco - Part of Jayco Family of Companies