



OPTIONS

A



15 Cu. Ft. Fridge

B

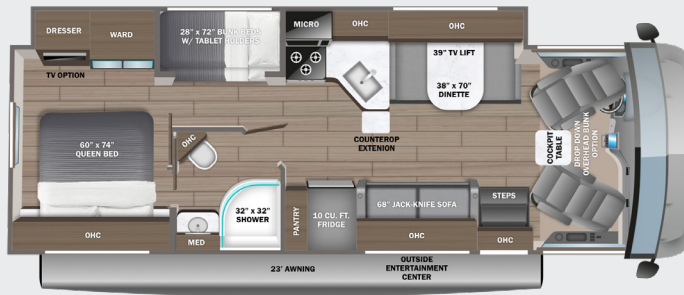


Theater Sofa

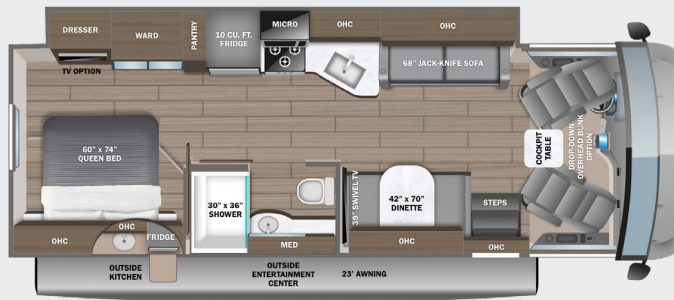
27A OPTION: A



29F OPTION: A



29S OPTION: B



EXTERIOR



Standard Graphics Package

STANDARDS & OPTIONS

CUSTOMER VALUE PACKAGE

JRide®: Computer-balanced driveshaft, Bilstein® steering stabilizer, jounce bumpers, heavy-duty front and rear stabilizer bars, SACHS shocks
 One-piece, seamless, crowned fiberglass roof
 Exterior entertainment center with outside speakers and LED HD Smart TV mounted on swivel bracket
 Electric patio awning with LED lights
 Slideout awning(s)
 1,000W inverter
 Sony® infotainment center with Apple® CarPlay™ and Android Auto™
 Backup and side-view cameras
 Removable driver/passenger cockpit table
 LED HD Smart TV in living area
 Blackout night roller shades

DRIVING

Ford® F53 chassis
 GVWR- 18,000 lb.
 GCWR- 23,000 lb.
 7.3L V-8 335 HP engine with 468 ft.-lb. torque
 6-speed automatic TorqShift® transmission with overdrive and tow haul mode
 210-amp alternator
 Catalytic converter theft deterrent
 G-rated highway tires-245/70R19.5
 Front and rear disc, 4-wheel anti-lock brakes
 5,000 lb. rear hitch receiver with dual connector and 7-pin plug
 12V chassis battery
 80 gal. fuel tank
 120 in. panoramic windshield
 Swivel driver and passenger seats
 6-way power driver seat
 Soft-touch, vinyl-wrapped automotive dash
 Tilt steering wheel
 Cruise control
 Hill start assist
 Electronic stability control
 Traction control
 Auxiliary start
 Power front privacy shade with manual side privacy shades

EXTERIOR

StrongholdVBL™ roof, floor and sidewalls
 Bead-foam insulation (R-24 max roof, R-9 max floor, R-8 max walls)
 One-piece, seamless, fiberglass front cap
 Fiberglass exterior walls with vinyl graphics
 Automatic hydraulic leveling jacks
 Frameless windows
 Entrance door with industry's largest travel-view window
 Electric-powered entrance steps
 Lockable, pass-through storage compartments with metal slam latches
 Third brake light
 4 in. bumper tube with sewer hose storage
 Roof ladder
 Prep for satellite dish
 Cable TV hookup with RG-6 coax and video selector switch

Winegard 2.0 Wi-fi/4G antenna
 Onan® Marquis Gold Genset 4,000W generator
 200W solar panel with dual controller and second house battery
 (2) 12V house batteries
 Transfer switch with reverse polarity protection
 30-amp electrical service
 16.5 gal. propane tank (56 lb.)
 LP quick-connect hookup
 Heated holding tanks (12V pads)
 Exterior utility center
 Winterization drain system
 Black tank flush
 Outside shower
 12V demand water pump
 Water filtration system

INTERIOR

84 in. interior ceiling height
 High-intensity recessed LED ceiling lights
 LED-lit hardwood fascia
 Hardwood cabinet doors and drawer fronts
 Ball-bearing drawer guides
 Jayco-exclusive, easy-operation legless dinette table
 2-point lap safety belts in all designated seating locations
 Car seat tethers (select floorplans)
 Dual A/C units with power management system
 30,000 BTU auto-ignition ducted furnace
 6 gal. gas/electric DSI auto-ignition water heater
 10 cu. ft. 12V refrigerator
 Furrion® all-in-one cooktop and oven
 Residential-size microwave
 Large stainless steel kitchen sink with cover
 LED-lit pressed countertops
 Flip-up countertop extension (select models)
 Decorative kitchen backsplash
 Pop-up charging station in kitchen with 120V outlets and USB ports
 Shower with decorative surround, glass door, skylight and light
 Stainless steel bathroom sink
 Porcelain toilet with foot flush
 Powered roof vent in bathroom with wall switch
 Walk-around, queen-size bed with bedspread and nightstands (king size in 27A)
 USB port and wireless charging in nightstands
 Under-bed storage (select models)
 Large wardrobes
 Bunks with industry-exclusive 300 lb. capacity each (29F)
 Wall-mounted tablet holder in each bunk (29F)
 Smoke alarm
 Carbon monoxide detector
 Fire extinguisher

OPTIONS

Drop-down overhead bunk in cab area with 750 lb. capacity
 Theater seating (29S)
 15 cu. ft. 12V refrigerator (27A, 29F)
 LED HD Smart TV in bedroom



BILSTEIN STEERING STABILIZER

Reduces driver fatigue by significantly improving steering, handling and comfort



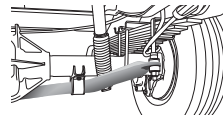
COMPUTER-BALANCED DRIVESHAFT

Ensures smooth and efficient power transfer to the wheels



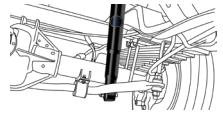
JOUNCE BUMPERS

Assist during extreme road occurrences to absorb impact and dampen excess road noise



HEAVY-DUTY FRONT & REAR STABILIZER BARS

A large bar and polyurethane bushings, instead of rubber, transfer power faster for extra support, more stability and easier handling



SACHS SHOCK ABSORBERS

Large-diameter tube design pairs gas and hydraulics to resist heat and pressure while independently adjusting to changing road conditions

FLOORPLAN	GVWR (lbs.)	GCWR (lbs.)	WHEEL BASE	OVERALL LENGTH	EXTERIOR HEIGHT WITH SATELLITE AND A/C	EXTERIOR WIDTH	INTERIOR HEIGHT	FRESH WATER CAPACITY (gal.)	GRAY WASTE WATER CAPACITY (gal.)	BLACK WASTE WATER CAPACITY (gal.)
27A	18,000	23,000	190"	29' 11"	12' 5"	101"	84"	72	50	49
29F	18,000	23,000	190"	32' 2"	12' 5"	101"	84"	72	40	49
29S	18,000	23,000	190"	31' 4"	12' 5"	101"	84"	72	40/9	50

Meet your Jayco Dealer



Scan QR code for specification definitions

Some specs at the time of print may include estimates. For the most updated information, please visit Jayco.com

Jayco Inc. | P.O. Box 460 | Middlebury, IN 46540

See dealer for further information and prices. All information in this brochure and on www.jayco.com is the latest available at the time of publication approval. Jayco reserves the right to make changes and to discontinue models without notice or obligation. Photography may show optional equipment or props used for decoration purposes only. RVs built for sale in Canada may differ to conform to Canadian codes. JAYCO and the JAYCO BIRD IN FLIGHT are registered trademarks of Jayco, Inc. Printed in USA 10/23 ©2023 Jayco, Inc.



Jayco - Part of Jayco Family of Companies